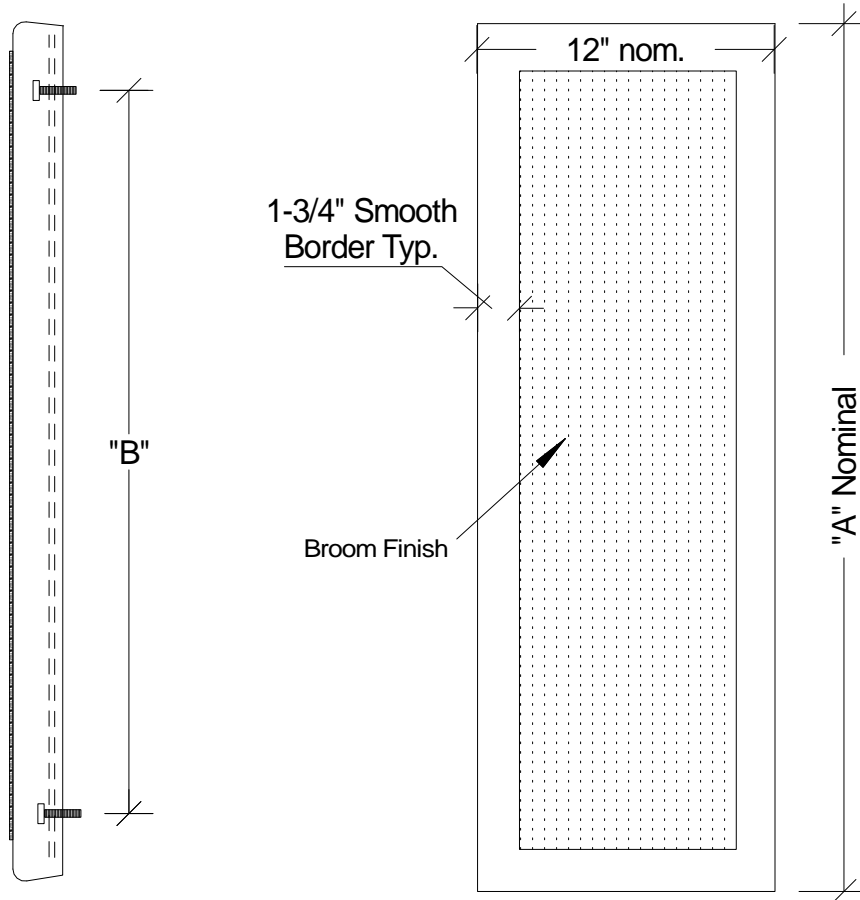
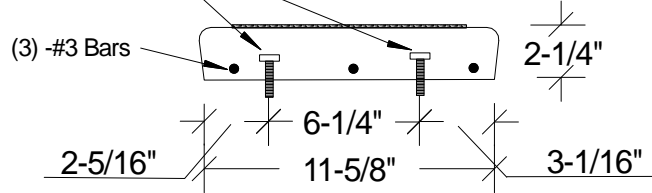


COMMERCIAL CONCRETE PRODUCTS, INC.

BROOM FINISH CONCRETE STAIR TREADS

(4) - 3/8" Dia. x 2" Bolts
(Cast in Concrete)



TREAD INFORMATION

PC. MK.	"A"	"B"	Wgt. (lbs.)
12 x 36	35-7/8"	31-1/2"	79
12 x 39-1/2"	39-3/8"	35"	92
12 x 42	41-7/8"	37-1/2"	97
12 x 44	43-7/8"	39-1/2"	101
12 x 48	47-7/8"	43-1/2"	105

5000 P.S.I. CONCRETE

Scale 1-1/2" = 1' 0"